

DEMOCRACY CORPS

CARVILLE ♦ GREENBERG

10 G STREET, NE ♦ SUITE 400 ♦ WASHINGTON, DC 20002
202-478-8330 (TEL) ♦ 202-289-8648 (FAX)
WWW.DEMOCRACYCORPS.COM

Founders

James Carville
Stanley Greenberg
Robert Shrum

Executive Director
Jim Gerstein

Senior Advisor
Karl Agne

Research Conducted by:
Greenberg Quinlan Rosner

Date: November 3, 2006
To: Friends of Democracy Corps
From: Karl Agne

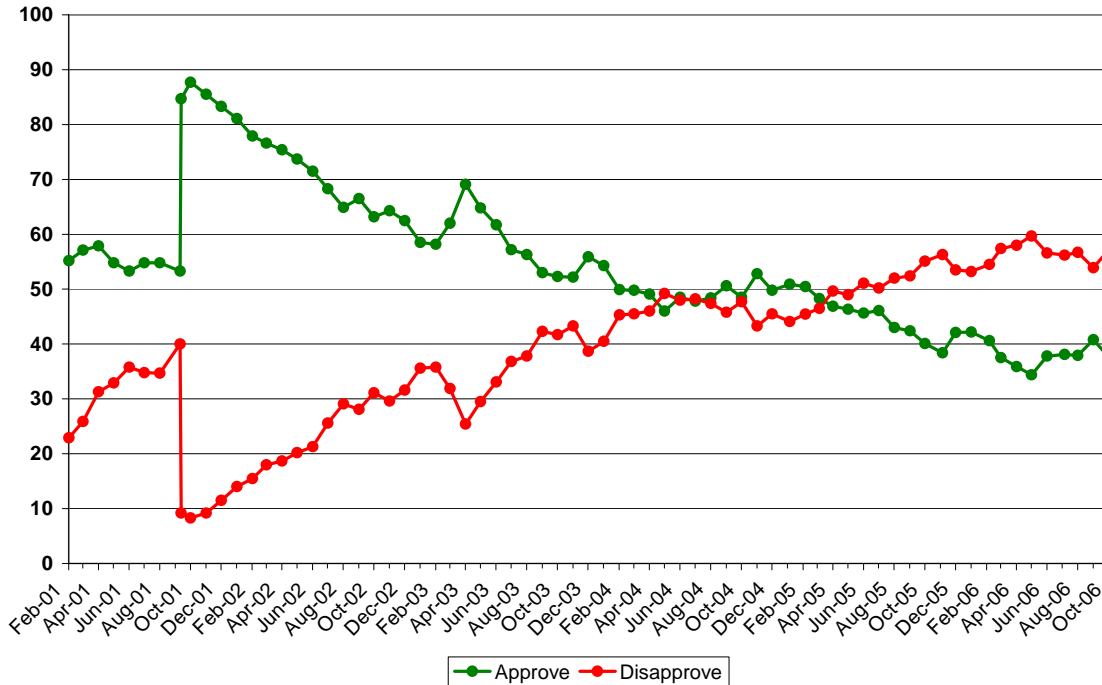
Pre-Election Day Alert **Large Democratic Lead Holds**

This week's public polls offer Democrats continued confidence heading into the final days of the mid-term campaign and a potentially historic election. Two new polls this week – one from CNN, the other from CBS News/*New York Times* – measured the generic congressional contest. They showed Democrats holding steady at 53 percent support and an average lead of 14.5 points – both unchanged from last week's average across 8 surveys. A third poll released this week, from the NBC News/*Wall Street Journal* partnership, eschews the traditional generic congressional vote for 'control of Congress' question, and thus is not a part of our rolling averages. But the result in this latest release is the same – a 15-point Democratic advantage (52 to 37 percent).

The change dynamic in this election is firmly entrenched and seemingly immune at this late stage to relatively small changes in the broader political environment. The last ten days have seen record highs on Wall Street, potential progress with North Korea, and a three-year high in consumer confidence (up to -3 in the ABC News/*Washington Post* Consumer Comfort Index). Yet Republicans reap no immediate political benefit from these developments, and time is running out for them.

Similar to the generic congressional vote, President Bush's job approval is virtually unchanged this week and for most of the month of October. Approval of his job performance remains at 38 percent across four polls this week while disapproval is steady at 57 percent. Both numbers have wavered by less than a point throughout this final month of the campaign.

Presidential Job Approval



The President is simply not popular, limiting his effectiveness as a campaign weapon for congressional Republicans, and his ongoing emphasis on Iraq has done nothing but elevate the issue driving the change dynamic in this election. After two and a half years in Iraq, an astonishing 69 percent of the public believes that Bush does not have a clear plan for dealing with Iraq. His recent efforts to claim a new strategy by playing linguistic games and saying he will no longer use the phrase “stay the course” were not at all credible; 80 percent in the CBS News/*New York Times* poll said this only marked a change in language and not in policy.

With the election now four days away, media attention is increasingly shifting to the Republicans’ vaunted 72-hour turnout effort and questioning whether Republicans can use superior tactics to defy the odds (and public opinion). As always, turnout will be critical for both sides in this election. But this week’s public polls provide the final confirmation that this year’s election will take place on very different terrain than 2000, 2002, or 2004. Today, Americans have rejected failed Republican leadership in Washington and overwhelmingly want change. They are poised to vote for change on Tuesday and to give Democrats a resounding victory.

BUSH JOB APPROVAL

		Approve	Disapprove	App – Disapp
Monthly Average – October	Oct-06	37.7	57.1	-19.4
Weekly Average – Oct. 29-Nov. 4		37.8	56.5	-18.8
CBS/NY Times	10/31/2006	34	58	-24.0
NBC News/Wall Street Journal^	10/30/2006	39	57	-18.0
CNN	10/29/2006	37	58	-21.0
Cook/RT Strategies^	10/29/2006	41	53	-12.0
Weekly Average – October 22-28		37.8	57.1	-19.3
Newsweek	10/27/2006	37	53	-16.0
AP-Ipsos#	10/25/2006	37	61	-24.0
Fox News/Opinion Dynamics^	10/25/2006	40	53	-13.0
Diageo/Hotline	10/23/2006	40	58	-18.0
Zogby	10/23/2006	36	64	-28.0
CNN	10/22/2006	39	58	-19.0
USA Today/Gallup	10/22/2006	37	58	-21.0
ABC News/Washington Post	10/22/2006	37	60	-23.0
Cook/RT Strategies^	10/22/2006	37	53	-16.0
Pew	10/22/2006	38	53	-15.0
Weekly Average – October 15-21		37.0	57.8	-20.8
Newsweek	10/20/2006	35	57	-22.0
Democracy Corps	10/17/2006	39	56	-17.0
NBC News/Wall Street Journal^	10/16/2006	38	57	-19.0
CNN	10/15/2006	36	61	-25.0
Weekly Average – October 8-14		37.8	57.8	-20.0
Gallup	10/12/2006	37	57	-20.0
Fox News/Opinion Dynamics^	10/11/2006	40	56	-16.0
CNN	10/8/2006	39	56	-17.0
ABC	10/8/2006	39	60	-21.0
CBS/NY Times	10/8/2006	34	60	-26.0
Weekly Average – October 1-7		37.9	56.6	-18.7
Newsweek	10/6/2006	33	59	-26.0
Time	10/4/2006	36	57	-21.0
AP-Ipsos#	10/4/2006	38	59	-21.0
Pew	10/4/2006	37	53	-16.0
Democracy Corps	10/3/2006	43	53	-10.0
NBC News/Wall Street Journal^	10/2/2006	39	56	-17.0
CNN	10/2/2006	39	59	-20.0
Monthly Average – September	Sep-06	41.3	54.0	-12.7
Monthly Average – August	Aug-06	37.9	56.7	-18.8
Monthly Average – July	Jul-06	38.1	56.2	-18.1
Monthly Average – June	Jun-06	37.8	56.6	-18.8
Monthly Average – May	May-06	34.4	59.7	-25.3

Public Polling Report — November 3, 2006

Monthly Average – April	Apr-06	35.9	58.0	-22.1
Monthly Average – March	Mar-06	37.5	57.4	-19.9
Monthly Average – February	Feb-06	40.6	54.5	-13.8
Monthly Average – January	Jan-06	42.2	53.2	-10.9
Monthly Average – December	Dec-05	42.1	53.5	-11.3
Monthly Average – November	Nov-05	38.4	56.3	-17.9
Monthly Average – October	Oct-05	40.1	55.1	-15.1
Monthly Average – September	Sep-05	42.4	52.4	-10.0
Monthly Average – August	Aug-05	43.0	52.0	-9.0
Monthly Average – July	Jul-05	46.1	50.2	-4.1
Monthly Average – June	Jun-05	45.6	51.1	-5.4
Monthly Average – May	May-05	46.4	49.0	-2.6
Monthly Average – April	Apr-05	46.9	49.1	-2.2
Monthly Average – March	Mar-05	48.3	46.5	1.8
Monthly Average – February	Feb-05	50.5	45.5	5.0
Monthly Average – January	Jan-05	50.9	44.1	6.8
Monthly Average – December	Dec-04	49.8	45.5	4.3
Monthly Average – November	Nov-04	52.8	43.3	9.5
Monthly Average – October	Oct-04	48.5	47.7	0.8
Monthly Average – September	Sep-04	50.6	45.8	4.8
Monthly Average – August	Aug-04	48.4	47.4	1
Monthly Average – July	Jul-04	47.8	48.2	-0.4
Monthly Average – June	Jun-04	48.5	48	0.5
Monthly Average – May	May-04	46	49.2	-3.2
Monthly Average – April	Apr-04	49.1	46	3.1
Monthly Average – March	Mar-04	49.8	45.5	4.3
Monthly Average – February	Feb-04	49.9	45.3	4.6
Monthly Average – January	Jan-04	54.3	40.5	13.8
Monthly Average – December	Dec-03	55.9	38.7	17.2
Monthly Average – November	Nov-03	52.2	43.3	8.9
Monthly Average – October	Oct-03	52.3	41.7	10.6
Monthly Average – September	Sep-03	53	42.3	10.7
Monthly Average – August	Aug-03	56.3	37.8	18.5
Monthly Average – July	Jul-03	57.2	36.8	20.4
Monthly Average – June	Jun-03	61.7	33.1	28.6
Monthly Average – May	May-03	64.8	29.5	35.3
Monthly Average – April	Apr-03	69.1	25.4	43.7
Monthly Average – March	Mar-03	62	31.9	30.1
Monthly Average – February	Feb-03	58.2	35.8	22.4
Monthly Average – January	Jan-03	58.5	35.6	22.9
Monthly Average – December	Dec-02	62.5	31.6	30.9
Monthly Average – November	Nov-02	64.3	29.6	34.7
Monthly Average – October	Oct-02	63.2	31.1	32.1
Monthly Average – September	Sep-02	66.5	28.1	38.4
Monthly Average – August	Aug-02	64.9	29.1	35.8
Monthly Average – July	Jul-02	68.3	25.6	42.7
Monthly Average – June	Jun-02	71.5	21.3	50.2
Monthly Average – May	May-02	73.7	20.2	53.5
Monthly Average – April	Apr-02	75.4	18.7	56.7
Monthly Average – March	Mar-02	76.6	18	58.6

Public Polling Report — November 3, 2006

Monthly Average – February	Feb-02	77.9	15.5	62.4
Monthly Average – January	Jan-02	81.1	14	67.1
Monthly Average – Dec.	Dec-01	83.3	11.5	71.8
Monthly Average – Nov.	Nov-01	85.5	9.2	76.3
Monthly Average – Oct.	Oct-01	87.7	8.3	79.4
Monthly Average – Sept.	Sep-01	84.7	9.2	75.5
Monthly Average – Sept.	Sep-01	53.3	40	13.3
Monthly Average – August	Aug-01	54.8	34.7	20.1
Monthly Average – July	Jul-01	54.8	34.8	20
Monthly Average – June	Jun-01	53.3	35.8	17.5
Monthly Average – May	May-01	54.8	32.9	21.9
Monthly Average – April	Apr-01	57.9	31.3	26.6
Monthly Average – March	Mar-01	57.1	25.9	31.2
Monthly Average – Feb.	Feb-01	55.2	22.9	32.3

COUNTRY DIRECTION					
Poll	Direction/Satisfied	Date	Right	Wrong	Right-Wrong
Monthly Average - October 2006		Oct-06	29.6	62.6	-33.0
Weekly Average - Oct. 29-Nov. 4			29.0	64.0	-35.0
CBS News/NY Times	D	10/31/2006	29	64	-35
Weekly Average - October 22-28			31.5	61.0	-29.5
Newsweek	S	10/27/2006	31	61	-30
AP/Ipsos#	D	10/25/2006	29	66	-37
Diageo/Hotline	D	10/23/2006	30	60	-30
Zogby	D	10/23/2006	36	57	-21
Weekly Average - October 15-21			26.3	63.7	-37.3
Newsweek	S	10/20/2006	25	67	-42
Democracy Corps#	D	10/17/2006	28	63	-35
NBC News/Wall Street Journal#	D	10/16/2006	26	61	-35
Weekly Average - October 8-14			30.0	68.0	-38.0
Gallup#	S	10/12/2006	30	68	-38
Weekly Average - October 1-7			30.2	62.0	-31.8
Newsweek	S	10/6/2006	25	67	-42
AP/Ipsos#	D	10/4/2006	33	63	-30
Pew Research Center#	S	10/4/2006	30	63	-33
Democracy Corps#	D	10/3/2006	34	59	-25
NBC News/Wall Street Journal#	D	10/2/2006	29	58	-29
Monthly Average - September 2006		Sep-06	32.0	60.8	-28.8
Monthly Average - August 2006		Aug-06	28.3	65.9	-37.6
Monthly Average - July 2006		Jul-06	29.5	63.5	-34.0
Monthly Average - June 2006		Jun-06	28.1	64.0	-35.9
Monthly Average - May 2006		May-06	25.0	69.8	-44.8
Monthly Average - April 2006		Apr-06	26.0	67.8	-41.8
Monthly Average - March 2006		Mar-06	29.9	64.0	-34.1
Monthly Average - February 2006		Feb-06	35.5	59.8	-24.3
Monthly Average - January 2006		Jan-06	35.0	57.9	-22.9
Monthly Average - December 2005		Dec-05	33.2	60.7	-27.5
Monthly Average - November 2005		Nov-05	30.9	63.9	-33.0
Monthly Average - October 2005		Oct-05	32.8	61.3	-28.5
Monthly Average - September 2005		Sep-05	33.5	61.5	-28.0
Monthly Average - August 2005		Aug-05	36.7	57.7	-21.0
Monthly Average - July 2005		Jul-05	37.8	56.4	-18.6
Monthly Average - June 2005		Jun-05	35.0	55.5	-20.5
Monthly Average - June 2005		Jun-05	37.1	55.9	-18.8
Monthly Average - May 2005		May-05	36.1	55.4	-19.3
Monthly Average - April 2005		Apr-05	36.9	54.6	-17.7

Public Polling Report — November 3, 2006

Monthly Average - March 2005	Mar-05	40.3	55.5	-15.3
Monthly Average - February 2005	Feb-05	41.2	51.8	-10.7
Monthly Average - January 2005	Jan-05	42.0	51.0	-9
Monthly Average - December 2004	Dec-04	42.5	49.5	-7
Monthly Average - November 2004	Nov-04	44.5	50.5	-6
Monthly Average - October 2004	Oct-04	40.9	53.6	-12.7
Monthly Average - September 2004	Sep-04	42.4	51.7	-9.3
Monthly Average - September 2004	Sep-04	42.4	51.7	-9.3
Monthly Average - August 2004	Aug-04	40.0	53.4	-13.4
Monthly Average - July 2004	Jul-04	39.1	54.3	-15.2
Monthly Average - June 2004	Jun-04	38.6	54.4	-15.8
Monthly Average - May 2004	May-04	34.6	58.6	-24
Monthly Average - April 2004	Apr-04	38.8	56.8	-18
Monthly Average - March 2004	Mar-04	39.0	54.8	-15.8
Monthly Average - February 2004	Feb-04	42.0	53.5	-11.5
Monthly Average - January 2004	Jan-04	46.9	47.2	-0.3
Monthly Average - December 2003	Dec-03	46.0	45.9	0.1
Monthly Average - November 2003	Nov-03	40.7	52.0	-11.3
Monthly Average - October 2003	Oct-03	40.3	53.4	-13.1
Monthly Average - September 2003	Sep-03	38.2	54.8	-16.6
Monthly Average - August 2003	Aug-03	40.8	52.8	-12
Monthly Average - July 2003	Jul-03	43.5	49.3	-5.8
Monthly Average - June 2003	Jun-03	47.2	46.0	1.2
Monthly Average - May 2003	May-03	51.0	42.2	8.8
Monthly Average - April 2003	Apr-03	56.5	35.0	21.5
Monthly Average - March 2003	Mar-03	46.6	46.6	0
Monthly Average - February 2003	Feb-03	40.0	52.8	-12.8
Monthly Average - January 2003	Jan-03	38.6	52.0	-13.4
Monthly Average - December 2002	Dec-02	43.4	48.2	-4.8
Monthly Average - November 2002	Nov-02	46.8	46.5	0.3
Monthly Average - October 2002	Oct-02	42.8	48.3	-5.5
Monthly Average - September 2002	Sep-02	46.2	45.3	0.8
Monthly Average - August 2002	Aug-02	46.0	47.0	-1
Monthly Average - July 2002	Jul-02	46.2	48.3	-2.2
Monthly Average - June 2002	Jun-02	49.6	39.0	10.6
Monthly Average - May 2002	May-02	52.0	40.2	11.8
Monthly Average - April 2002	Apr-02	55.5	34.3	21.3
Monthly Average - March 2002	Mar-02	56.0	36.3	19.8
Monthly Average - February 2002	Feb-02	63.0	31.5	31.5
Monthly Average - January 2002	Jan-02	63.5	28.0	35.5
Monthly Average - December 2001	Dec-01	67.7	22.7	45
Monthly Average - November 2001	Nov-01	63.7	27.3	36.3
Monthly Average - October 2001	Oct-01	67.0	29.0	38
<i>Average - September 11-30, 2001</i>	<i>9/11-30/2001</i>	<i>59.3</i>	<i>32.7</i>	<i>26.7</i>
<i>Average - January 1-September 10, 2001</i>	<i>1/1-9/11/2001</i>	<i>48.1</i>	<i>43.2</i>	<i>5</i>
Yearly Average - 2000	2000	53	37	16.5
Yearly Average - 1999	1999	52	39	12.5
Yearly Average - 1998	1998	54	38	15.4
Yearly Average - 1997	1997	46	46	0.2

GENERIC CONGRESSIONAL BALLOT

	Date	Republicans	Democrats	D-R
Monthly Average - October	Oct-06	38.8	53.1	14.3
Weekly Average - Oct. 29-Nov. 4		38.0	52.5	14.5
CBS/New York Times RV	10/31/2006	34	52	18
CNN LV	10/29/2006	42	53	11
Weekly Average - October 22-28		38.5	53.0	14.5
Newsweek LV	10/27/2006	39	53	14
AP-Ipsos LV	10/26/2006	37	56	19
Fox News/Opinion Dynamics LV	10/25/2006	38	49	11
Diageo/Hotline LV	10/23/2006	34	52	18
CNN LV	10/22/2006	40	57	17
USA Today/Gallup RV	10/22/2006	41	54	13
ABC/Washington Post RV	10/22/2006	41	54	13
Pew RV	10/22/2006	38	49	11
Weekly Average - October 15-21		39.3	55.0	15.7
Newsweek LV	10/20/2006	37	55	18
Democracy Corps LV	10/17/2006	41	54	13
CNN LV	10/15/2006	40	56	16
Weekly Average - October 8-14		38.0	54.0	16.0
Fox News/Opinion Dynamics LV	10/11/2006	41	50	9
CNN LV	10/8/2006	37	58	21
USA Today/Gallup RV	10/8/2006	36	59	23
ABC/Washington Post RV	10/8/2006	41	54	13
CBS/New York Times RV	10/8/2006	35	49	14
Weekly Average - October 1-7		39.8	51.8	12.0
Newsweek RV	10/6/2006	38	51	13
Time AV	10/4/2006	39	54	15
AP-Ipsos RV	10/4/2006	41	51	10
Pew RV	10/4/2006	38	51	13
Democracy Corps LV	10/5/2006	41	51	10
CNN LV	10/2/2006	42	53	11
Monthly Average - September	Sep-06	40.3	49.1	9.1
Monthly Average - August	Aug-06	38.3	49.5	11.3
Monthly Average - July	Jul-06	37.9	48.3	10.4
Monthly Average - June	Jun-06	38.2	48.9	10.7
Monthly Average - May	May-06	37.6	47.5	9.9
Monthly Average - April	Apr-06	39.0	49.4	10.4

Public Polling Report — November 3, 2006

Monthly Average - March	Mar-06	38.3	51.0	12.8
Monthly Average - February	Feb-06	40.6	47.0	6.4
Monthly Average - January	Jan-06	37.0	46.7	9.7
Monthly Average - December	Dec-05	37.1	46.7	9.6
Monthly Average - November	Nov-05	37.8	48.4	10.6
Monthly Average - October	Oct-05	39.0	46.2	7.2
Monthly Average - September	Sep-05	39.8	49.3	9.5