

DEMOCRACY CORPS

CARVILLE ♦ GREENBERG

10 G STREET, NE ♦ SUITE 400 ♦ WASHINGTON, DC 20002
202-478-8330 (TEL) ♦ 202-289-8648 (FAX)
WWW.DEMOCRACYCORPS.COM

Founders

James Carville
Stanley Greenberg
Robert Shrum

Executive Director
Jim Gerstein

Senior Advisor
Karl Agne

Research Conducted by:
Greenberg Quinlan Rosner

pllDate: October 27, 2006
To: Friends of Democracy Corps
From: Karl Agne

Report on Public Polling Time Running Out for the GOP

As we head into the final ten days of the 2006 campaign, a wealth of new public poll releases confirm that Democrats hold a commanding and stable lead in the race for Congress. Neither President Bush nor congressional Republicans are making the dramatic changes needed to change the strong change dynamic dominating the political environment on the eve of the mid-term elections. Democrats have slipped slightly in the generic congressional contest this week but still lead by 15 points and attract a clear majority of 53 percent across the most recent seven surveys.

The overall generic congressional vote is holding steady from last week, but a very important dynamic has emerged this week. Most of the surveys released in the first two weeks of this month were among registered voters and gave Democrats an average margin of 14 points over those two weeks. Then, last week's two new polls, conducted among likely voters, showed the Democratic margin expanding to 17 points (56 to 39 percent). This week, the four polls conducted among likely voters show the Democratic margin holding steady at 17 points among those critical voters (54 to 37 percent), while the three polls among the broader universe of registered voters put the Democratic margin at 12 points (52 to 40 percent). While not definitive, this offers another piece of evidence that Democratic voters remain more energized for this election and more likely to turn out on November 7th.

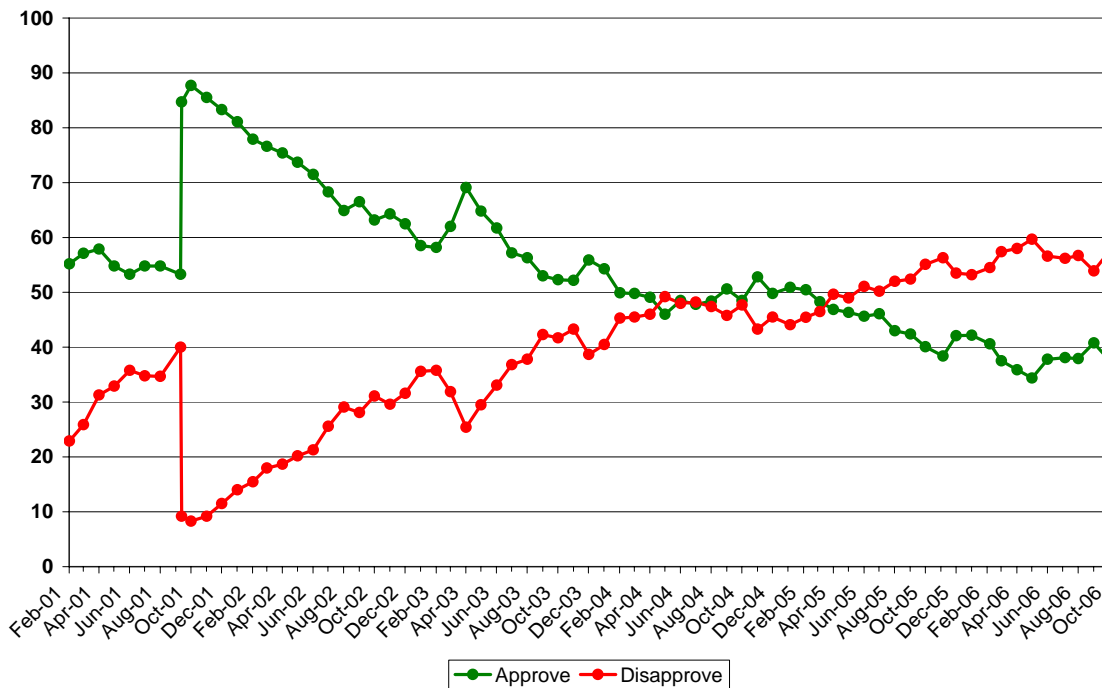
Independent voters are, as always, key to this election. With their attitudes on key measures such as the direction of the country and Bush job approval resembling partisan Democrats more than swing voters, Independents give Democrats a 15-point edge in the Diageo/Hotline poll of likely voters and a 16-point advantage in the Pew poll of registered voters. While Democrats and progressive groups are wisely gearing up their GOTV efforts to turn out their base voters, the size of the political wave that breaks on November 7th will depend heavily on the turnout among Independent voters who are deeply

dissatisfied with the status quo in Washington and are now looking to Democrats to lead the Congress and the country in a new direction.

Over the past week, President Bush has engaged in a calculated political risk to raise his own approval marks and to help Republican congressional candidates, elevating his visibility despite low approval marks and very publicly defending (and refining) his Iraq policy. This decision has caused consternation among Republican candidates, and with good reason. Bush’s gamble shows no signs of paying off, as voters remain overwhelmingly negative about the war and Bush’s leadership on Iraq. The issue is even reaching into the Republican base, as only 41 percent of Republicans in the Pew poll said the war is going well (down 15 points from their September poll) and 46 percent of white evangelicals said that the U.S. should establish a timetable for withdrawal of troops.

Similarly, the Bush public relations offensive has done nothing to help the President’s own public standing. Bush’s job approval of 38 percent is a negligible 1-point rise from last week and matches his average for the month. For the fourth week in a row, a striking 58 percent of Americans disapprove of Bush’s job performance.

Presidential Job Approval



The broader political environment has grown slightly more positive this week, with the Zogby poll contributing to better overall numbers on the country’s direction – 32 percent right direction (up 6 points from last week), 61 percent wrong track (down 3 points). The ABC/Washington Post Consumer Comfort Index held its rapid recent gains this week, remaining at -7, matching its high point of the year. But we must underscore that, while attitudes toward

the direction of the country may have improved, there was no corresponding improvement in key political measures for President Bush or Republicans in Congress.

Overall, there has been little change in the historic political environment leading up to these mid-term elections. The Democratic advantage is large and holding strong in national polling. President Bush has failed to rebuild public frustration with his leadership, and Iraq remains the dominant issue, to the detriment of Republican candidates across the country.

BUSH JOB APPROVAL

		Approve	Disapprove	App – Disapp
Monthly Average – October	Oct-06	37.7	57.4	-19.7
Weekly Average – October 22-28		37.9	57.6	-19.7
AP-Ipsos#	10/26/2006	37	61	-24.0
Fox News/Opinion Dynamics^	10/25/2006	40	53	-13.0
Diageo/Hotline	10/23/2006	40	58	-18.0
Zogby	10/23/2006	36	64	-28.0
CNN	10/22/2006	39	58	-19.0
USA Today/Gallup	10/22/2006	37	58	-21.0
ABC News/Washington Post	10/22/2006	37	60	-23.0
Cook/RT Strategies^	10/22/2006	37	53	-16.0
Pew	10/22/2006	38	53	-15.0
Weekly Average – October 15-21		37.0	57.8	-20.8
Newsweek	10/20/2006	35	57	-22.0
Democracy Corps	10/17/2006	39	56	-17.0
NBC News/Wall Street Journal^	10/16/2006	38	57	-19.0
CNN	10/15/2006	36	61	-25.0
Weekly Average – October 8-14		37.8	57.8	-20.0
Gallup	10/12/2006	37	57	-20.0
Fox News/Opinion Dynamics^	10/11/2006	40	56	-16.0
CNN	10/8/2006	39	56	-17.0
ABC	10/8/2006	39	60	-21.0
CBS/NY Times	10/8/2006	34	60	-26.0
Weekly Average – October 1-7		37.9	56.6	-18.7
Newsweek	10/6/2006	33	59	-26.0
Time	10/4/2006	36	57	-21.0
AP-Ipsos#	10/4/2006	38	59	-21.0
Pew	10/4/2006	37	53	-16.0
Democracy Corps	10/3/2006	43	53	-10.0
NBC News/Wall Street Journal^	10/2/2006	39	56	-17.0
CNN	10/2/2006	39	59	-20.0
Monthly Average – September	Sep-06	41.3	54.0	-12.7
Monthly Average – August	Aug-06	37.9	56.7	-18.8
Monthly Average – July	Jul-06	38.1	56.2	-18.1
Monthly Average – June	Jun-06	37.8	56.6	-18.8
Monthly Average – May	May-06	34.4	59.7	-25.3
Monthly Average – April	Apr-06	35.9	58.0	-22.1
Monthly Average – March	Mar-06	37.5	57.4	-19.9
Monthly Average – February	Feb-06	40.6	54.5	-13.8
Monthly Average – January	Jan-06	42.2	53.2	-10.9
Monthly Average – December	Dec-05	42.1	53.5	-11.3
Monthly Average – November	Nov-05	38.4	56.3	-17.9
Monthly Average – October	Oct-05	40.1	55.1	-15.1

Public Polling Report — October 27, 2006

Monthly Average – September	Sep-05	42.4	52.4	-10.0
Monthly Average – August	Aug-05	43.0	52.0	-9.0
Monthly Average – July	Jul-05	46.1	50.2	-4.1
Monthly Average – June	Jun-05	45.6	51.1	-5.4
Monthly Average – May	May-05	46.4	49.0	-2.6
Monthly Average – April	Apr-05	46.9	49.1	-2.2
Monthly Average – March	Mar-05	48.3	46.5	1.8
Monthly Average – February	Feb-05	50.5	45.5	5.0
Monthly Average – January	Jan-05	50.9	44.1	6.8
Monthly Average – December	Dec-04	49.8	45.5	4.3
Monthly Average – November	Nov-04	52.8	43.3	9.5
Monthly Average – October	Oct-04	48.5	47.7	0.8
Monthly Average – September	Sep-04	50.6	45.8	4.8
Monthly Average – August	Aug-04	48.4	47.4	1
Monthly Average – July	Jul-04	47.8	48.2	-0.4
Monthly Average – June	Jun-04	48.5	48	0.5
Monthly Average – May	May-04	46	49.2	-3.2
Monthly Average – April	Apr-04	49.1	46	3.1
Monthly Average – March	Mar-04	49.8	45.5	4.3
Monthly Average – February	Feb-04	49.9	45.3	4.6
Monthly Average – January	Jan-04	54.3	40.5	13.8
Monthly Average – December	Dec-03	55.9	38.7	17.2
Monthly Average – November	Nov-03	52.2	43.3	8.9
Monthly Average – October	Oct-03	52.3	41.7	10.6
Monthly Average – September	Sep-03	53	42.3	10.7
Monthly Average – August	Aug-03	56.3	37.8	18.5
Monthly Average – July	Jul-03	57.2	36.8	20.4
Monthly Average – June	Jun-03	61.7	33.1	28.6
Monthly Average – May	May-03	64.8	29.5	35.3
Monthly Average – April	Apr-03	69.1	25.4	43.7
Monthly Average – March	Mar-03	62	31.9	30.1
Monthly Average – February	Feb-03	58.2	35.8	22.4
Monthly Average – January	Jan-03	58.5	35.6	22.9
Monthly Average – December	Dec-02	62.5	31.6	30.9
Monthly Average – November	Nov-02	64.3	29.6	34.7
Monthly Average – October	Oct-02	63.2	31.1	32.1
Monthly Average – September	Sep-02	66.5	28.1	38.4
Monthly Average – August	Aug-02	64.9	29.1	35.8
Monthly Average – July	Jul-02	68.3	25.6	42.7
Monthly Average – June	Jun-02	71.5	21.3	50.2
Monthly Average – May	May-02	73.7	20.2	53.5
Monthly Average – April	Apr-02	75.4	18.7	56.7
Monthly Average – March	Mar-02	76.6	18	58.6
Monthly Average – February	Feb-02	77.9	15.5	62.4
Monthly Average – January	Jan-02	81.1	14	67.1
Monthly Average – Dec.	Dec-01	83.3	11.5	71.8
Monthly Average – Nov.	Nov-01	85.5	9.2	76.3
Monthly Average – Oct.	Oct-01	87.7	8.3	79.4
Monthly Average – Sept.	Sep-01	84.7	9.2	75.5
Monthly Average – Sept.	Sep-01	53.3	40	13.3

Public Polling Report — October 27, 2006

Monthly Average – August	Aug-01	54.8	34.7	20.1
Monthly Average – July	Jul-01	54.8	34.8	20
Monthly Average – June	Jun-01	53.3	35.8	17.5
Monthly Average – May	May-01	54.8	32.9	21.9
Monthly Average – April	Apr-01	57.9	31.3	26.6
Monthly Average – March	Mar-01	57.1	25.9	31.2
Monthly Average – Feb.	Feb-01	55.2	22.9	32.3

COUNTRY DIRECTION					
Poll	Direction/Satisfied	Date	Right	Wrong	Right-Wrong
Monthly Average - October 2006		October-06	29.9	63.0	-33.1
Weekly Average - October 22-28			31.7	61.0	-29.3
AP/Ipsos#	D	10/25/2006	29	66	-37
Diageo/Hotline	D	10/23/2006	30	60	-30
Zogby	D	10/23/2006	36	57	-21
Weekly Average - October 15-21			26.3	63.7	-37.3
Newsweek	S	10/20/2006	25	67	-42
Democracy Corps#	D	10/17/2006	28	63	-35
NBC News/Wall Street Journal#	D	10/16/2006	26	61	-35
Weekly Average - October 8-14			30.0	68.0	-38.0
Gallup#	S	10/12/2006	30	68	-38
Weekly Average - October 1-7			30.2	62.0	-31.8
Newsweek	S	10/6/2006	25	67	-42
AP/Ipsos#	D	10/4/2006	33	63	-30
Pew Research Center#	S	10/4/2006	30	63	-33
Democracy Corps#	D	10/3/2006	34	59	-25
NBC News/Wall Street Journal#	D	10/2/2006	29	58	-29
Monthly Average - September 2006		Sep-06	32.0	60.8	-28.8
Monthly Average - August 2006		Aug-06	28.3	65.9	-37.6
Monthly Average - July 2006		Jul-06	29.5	63.5	-34.0
Monthly Average - June 2006		Jun-06	28.1	64.0	-35.9
Monthly Average - May 2006		May-06	25.0	69.8	-44.8
Monthly Average - April 2006		Apr-06	26.0	67.8	-41.8
Monthly Average - March 2006		Mar-06	29.9	64.0	-34.1
Monthly Average - February 2006		Feb-06	35.5	59.8	-24.3
Monthly Average - January 2006		Jan-06	35.0	57.9	-22.9
Monthly Average - December 2005		Dec-05	33.2	60.7	-27.5
Monthly Average - November 2005		Nov-05	30.9	63.9	-33.0
Monthly Average - October 2005		Oct-05	32.8	61.3	-28.5
Monthly Average - September 2005		Sep-05	33.5	61.5	-28.0
Monthly Average - August 2005		Aug-05	36.7	57.7	-21.0
Monthly Average - July 2005		Jul-05	37.8	56.4	-18.6
Monthly Average - June 2005		Jun-05	35.0	55.5	-20.5
Monthly Average - June 2005		Jun-05	37.1	55.9	-18.8
Monthly Average - May 2005		May-05	36.1	55.4	-19.3
Monthly Average - April 2005		Apr-05	36.9	54.6	-17.7
Monthly Average - March 2005		Mar-05	40.3	55.5	-15.3
Monthly Average - February 2005		Feb-05	41.2	51.8	-10.7
Monthly Average - January 2005		Jan-05	42.0	51.0	-9
Monthly Average - December 2004		Dec-04	42.5	49.5	-7

Public Polling Report — October 27, 2006

Monthly Average - November 2004	Nov-04	44.5	50.5	-6
Monthly Average - October 2004	Oct-04	40.9	53.6	-12.7
Monthly Average - September 2004	Sep-04	42.4	51.7	-9.3
Monthly Average - September 2004	Sep-04	42.4	51.7	-9.3
Monthly Average - August 2004	Aug-04	40.0	53.4	-13.4
Monthly Average - July 2004	Jul-04	39.1	54.3	-15.2
Monthly Average - June 2004	Jun-04	38.6	54.4	-15.8
Monthly Average - May 2004	May-04	34.6	58.6	-24
Monthly Average - April 2004	Apr-04	38.8	56.8	-18
Monthly Average - March 2004	Mar-04	39.0	54.8	-15.8
Monthly Average - February 2004	Feb-04	42.0	53.5	-11.5
Monthly Average - January 2004	Jan-04	46.9	47.2	-0.3
Monthly Average - December 2003	Dec-03	46.0	45.9	0.1
Monthly Average - November 2003	Nov-03	40.7	52.0	-11.3
Monthly Average - October 2003	Oct-03	40.3	53.4	-13.1
Monthly Average - September 2003	Sep-03	38.2	54.8	-16.6
Monthly Average - August 2003	Aug-03	40.8	52.8	-12
Monthly Average - July 2003	Jul-03	43.5	49.3	-5.8
Monthly Average - June 2003	Jun-03	47.2	46.0	1.2
Monthly Average - May 2003	May-03	51.0	42.2	8.8
Monthly Average - April 2003	Apr-03	56.5	35.0	21.5
Monthly Average - March 2003	Mar-03	46.6	46.6	0
Monthly Average - February 2003	Feb-03	40.0	52.8	-12.8
Monthly Average - January 2003	Jan-03	38.6	52.0	-13.4
Monthly Average - December 2002	Dec-02	43.4	48.2	-4.8
Monthly Average - November 2002	Nov-02	46.8	46.5	0.3
Monthly Average - October 2002	Oct-02	42.8	48.3	-5.5
Monthly Average - September 2002	Sep-02	46.2	45.3	0.8
Monthly Average - August 2002	Aug-02	46.0	47.0	-1
Monthly Average - July 2002	Jul-02	46.2	48.3	-2.2
Monthly Average - June 2002	Jun-02	49.6	39.0	10.6
Monthly Average - May 2002	May-02	52.0	40.2	11.8
Monthly Average - April 2002	Apr-02	55.5	34.3	21.3
Monthly Average - March 2002	Mar-02	56.0	36.3	19.8
Monthly Average - February 2002	Feb-02	63.0	31.5	31.5
Monthly Average - January 2002	Jan-02	63.5	28.0	35.5
Monthly Average - December 2001	Dec-01	67.7	22.7	45
Monthly Average - November 2001	Nov-01	63.7	27.3	36.3
Monthly Average - October 2001	Oct-01	67.0	29.0	38
<i>Average - September 11-30, 2001</i>	<i>9/11-30/2001</i>	<i>59.3</i>	<i>32.7</i>	<i>26.7</i>
<i>Average - January 1-September 10, 2001</i>	<i>1/1-9/11/2001</i>	<i>48.1</i>	<i>43.2</i>	<i>5</i>
Yearly Average - 2000	2000	53	37	16.5
Yearly Average - 1999	1999	52	39	12.5
Yearly Average - 1998	1998	54	38	15.4
Yearly Average - 1997	1997	46	46	0.2

GENERIC CONGRESSIONAL BALLOT

	Date	Republicans	Democrats	D-R
Monthly Average - October	Oct-06	39.2	53.2	14.0
Weekly Average - October 22-28		38.4	53.0	14.6
AP-Ipsos LV	10/26/2006	37	56	19
Fox News/Opinion Dynamics LV	10/25/2006	38	49	11
Diageo/Hotline LV	10/23/2006	34	52	18
CNN LV	10/22/2006	40	57	17
USA Today/Gallup RV	10/22/2006	41	54	13
ABC/Washington Post RV	10/22/2006	41	54	13
Pew RV	10/22/2006	38	49	11
Weekly Average - October 15-21		39.3	55.0	15.7
Newsweek LV	10/20/2006	37	55	18
Democracy Corps LV	10/17/2006	41	54	13
CNN LV	10/15/2006	40	56	16
Weekly Average - October 8-14		38.0	54.0	16.0
Fox News/Opinion Dynamics LV	10/11/2006	41	50	9
CNN LV	10/8/2006	37	58	21
USA Today/Gallup RV	10/8/2006	36	59	23
ABC/Washington Post RV	10/8/2006	41	54	13
CBS/New York Times RV	10/8/2006	35	49	14
Weekly Average - October 1-7		39.8	51.8	12.0
Newsweek RV	10/6/2006	38	51	13
Time AV	10/4/2006	39	54	15
AP-Ipsos RV	10/4/2006	41	51	10
Pew RV	10/4/2006	38	51	13
Democracy Corps LV	10/5/2006	41	51	10
CNN LV	10/2/2006	42	53	11
Monthly Average - September	Sep-06	40.3	49.1	9.1
Monthly Average - August	Aug-06	38.3	49.5	11.3
Monthly Average - July	Jul-06	37.9	48.3	10.4
Monthly Average - June	Jun-06	38.2	48.9	10.7
Monthly Average - May	May-06	37.6	47.5	9.9
Monthly Average - April	Apr-06	39.0	49.4	10.4
Monthly Average - March	Mar-06	38.3	51.0	12.8
Monthly Average - February	Feb-06	40.6	47.0	6.4
Monthly Average - January	Jan-06	37.0	46.7	9.7
Monthly Average - December	Dec-05	37.1	46.7	9.6
Monthly Average - November	Nov-05	37.8	48.4	10.6

Public Polling Report — October 27, 2006

Monthly Average - October	Oct-05	39.0	46.2	7.2
Monthly Average - September	Sep-05	39.8	49.3	9.5